

LOCATION MAP



VICINITY MAP

SHEET	TITLE
1	COVER PAGE
2	EXISTING FACILITIES PLAN
3	ULTIMATE AIRPORT LAYOUT PLAN
4	TERMINAL AREA PLAN
5	RUNWAY 14-32 APPROACH PLAN & PROFILE
6	RUNWAY 3-21 APPROACH PLAN & PROFILE
7	F.A.R. PART 77 AIRSPACE PLAN
8	LAND-USE PLAN

INDEX OF SHEETS

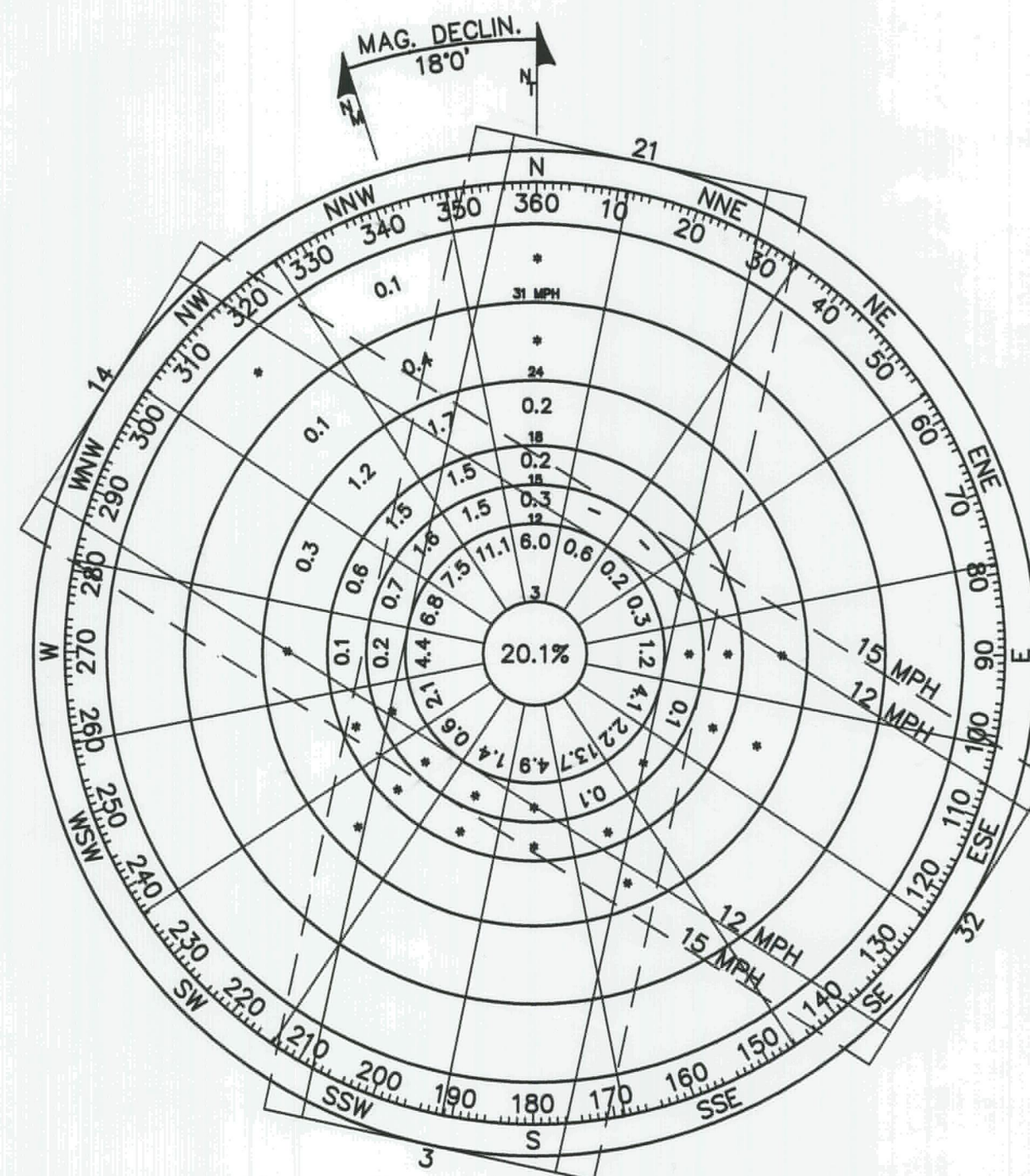
# AIRPORT MASTER PLAN UPDATE

## GREENVILLE MUNICIPAL AIRPORT GREENVILLE, MAINE

A.I.P. NO. 3-23-0049-07

23 6

APRIL 2001



LOCATION: GREENVILLE, ME.,  
RECORDING STATION #14614  
PERIOD: JANUARY, 1970 TO DECEMBER,  
1974 - 5-6 DAILY OBSERVATIONS;  
8,360 TOTAL  
SOURCE: U.S. DEPARTMENT OF COMMERCE  
NATIONAL OCEANIC AND ATMOSPHERIC  
ADMINISTRATION, NATIONAL CLIMATIC  
CENTER, ASHEVILLE, NORTH CAROLINA

WIND COVERAGE  
CALMS (0-3 MPH) = 20.7%  
WIND COVERAGE  
R/W 03-21 = 94.8%  
R/W 14-32 = 96.5%  
COMBINED = 99.5%

OFFICES:

VERMONT	NEW YORK	MASSACHUSETTS
Montpelier	Newburgh	Boston
N. Springfield	Pawling	Greenfield
S. Burlington	Rochester	Westford
Williston	Saratoga Springs	
	MAINE	FLORIDA
	Portland	Port Charlotte
		Sarasota
NEW HAMPSHIRE		
Manchester		



Portland, Maine  
Tel. (207) 775-3211 • FAX (207) 775-6434  
www.dufresne-henry.com



RUNWAY DATA	RUNWAY 14-32	RUNWAY 03-21
PAVEMENT STRENGTH	30,000 LBS. SINGLE WHEEL	12,500 LBS. SINGLE WHEEL
APPROACH SURFACES	R/W 14: 20:1 NP R/W 32: 20:1 VISUAL	R/W 03: 20:1 VISUAL R/W 21: 20:1 VISUAL
RUNWAY MARKINGS	NON-PRECISION	VISUAL
RUNWAY LIGHTING	MIRLS	LIRLS
RUNWAY NAVAIDS	R/W 14: PAPI - 4R R/W 32: VASI - 4L	NONE
RSA DIMENSIONS	120' X 4,480'	120' X 3,480'
EFFECTIVE GRADIENT	0.28%	0.73%
RUNWAY END ELEVATIONS	R/W 14: 1379' MSL R/W 32: 1368' MSL	R/W 03: 1374' MSL R/W 21: 1396' MSL
RUNWAY END COORDINATES	R/W 14: 44° 18' 54" 78° 43' 25" R/W 32: 44° 18' 39" 78° 42' 34"	R/W 03: 44° 18' 36" 78° 43' 9" R/W 21: 44° 19' 5" 78° 43' 6"

**RUNWAY PROTECTION ZONE (RPZ) DIMENSIONS**

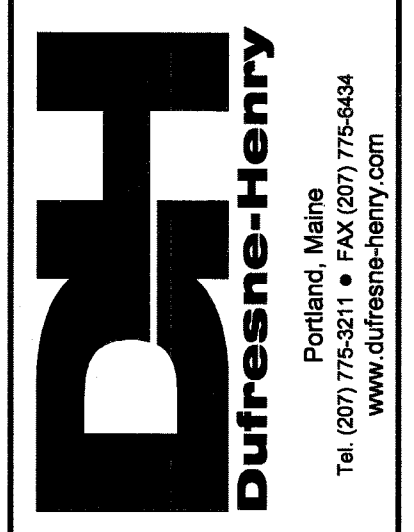
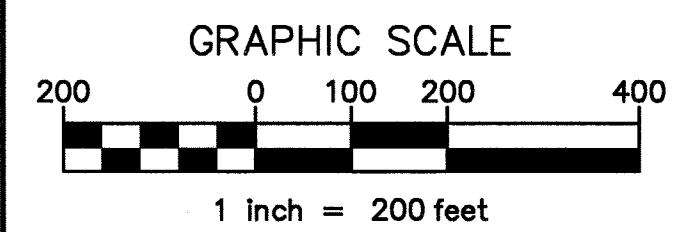
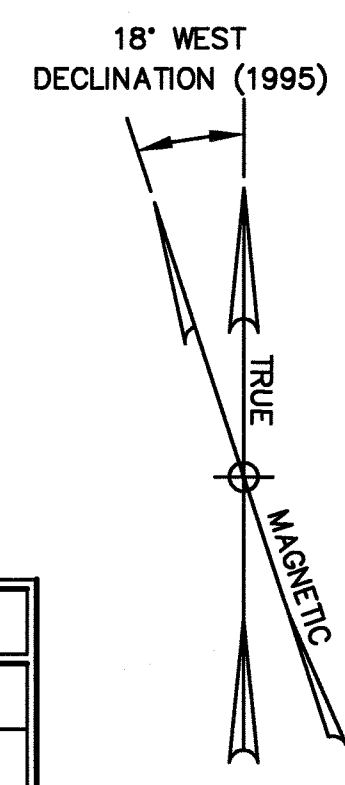
RUNWAY	INNER WIDTH	OUTER WIDTH	LENGTH	ACRES
RUNWAY 14	500'	700'	1,000'	13.77
RUNWAY 32	500'	700'	1,000'	13.77
RUNWAY 03	250'	450'	1,000'	8.04
RUNWAY 21	250'	450'	1,000'	8.04

LEGEND	EXISTING
AIRPORT PROPERTY LINE	---
PAVEMENT	=====
AVIGATION EASEMENT	
FENCE LINE	-----
BUILDING	▭
TREE LINE	~~~~~
AIRPORT REFERENCE POINT (ARP)	⊙
REIL'S	▽
PAPI	□ □ □ □
WETLANDS	~~~~~
UTILITY POLE	⊕
10' CONTOURS	-----
RUNWAY SAFETY AREA (RSA)	-----
OBJECT FREE AREA (OFA)	-----
BUILDING RESTRICTION LINE (BRL)	-----
RUNWAY VISIBILITY ZONE	-----
GRAVEL ROADWAY	-----
LEASE LOT LINE	-----
VASI	⊕

**NOTE:**  
BUILDING RESTRICTION LINE (BRL) WAS ESTABLISHED IN ACCORDANCE WITH FAA DESIGN AND FAR PART 77 CRITERIA. GREENVILLE UTILIZES A 30 FT. VERTICAL OBJECT HEIGHT. THE BRL LOCATION MAY CHANGE DUE TO GROUND CONTOURS OR DIFFERENT OBJECT HEIGHTS, BUT ALWAYS IN ACCORDANCE WITH FAR PART 77 AND FAA DESIGN CRITERIA.

AIRPORT DATA	EXISTING
AIRPORT ELEVATION	1400'
AIRPORT REFERENCE POINT	LAT. 45°27'46.8" N LONG. 69°33'06" W
MEAN MAX. TEMP. (HOTTEST MO.)	79°F
TAXIWAY LIGHTING	MITLS (PARTIAL)
TAXIWAY MARKING	NONE
AIRPORT/TERMINAL NAVAIDS	NDB
AIRPORT REFERENCE CODE (ARC)	BI
ACREAGE OWNED IN FEE SIMPLE	270.7 ACRES
ACREAGE OWNED IN EASEMENT	9.79 ACRES
USE/OWNERSHIP	PUBLIC/PUBLIC

EXISTING	BUILDINGS
①	PRIVATE CONVENTIONAL HANGAR
②	PRIVATE CONVENTIONAL HANGAR
③	FBO HANGAR
④	PRIVATE CONVENTIONAL HANGAR
⑤	PRIVATE CONVENTIONAL HANGAR
⑥	HOUSE
⑦	PRIVATE CONVENTIONAL HANGAR
⑧	PRIVATE CONVENTIONAL HANGAR
⑨	PRIVATE CONVENTIONAL HANGAR
⑩	PRIVATE CONVENTIONAL HANGAR/STORAGE
⑪	PRIVATE CONVENTIONAL HANGAR



Rev.	Description	By	Date

GREENVILLE MUNICIPAL AIRPORT  
A.I.P. NO. 3-23-0048-07

**EXISTING FACILITIES PLAN**

GREENVILLE

Project No.	8180054.01
Proj. Manager	JW
Proj. Designer	EGD
Drawn By	MRS/CM
Checked By	JW
Scale	1"=200'
Approved	DCD
Date	11/28/00





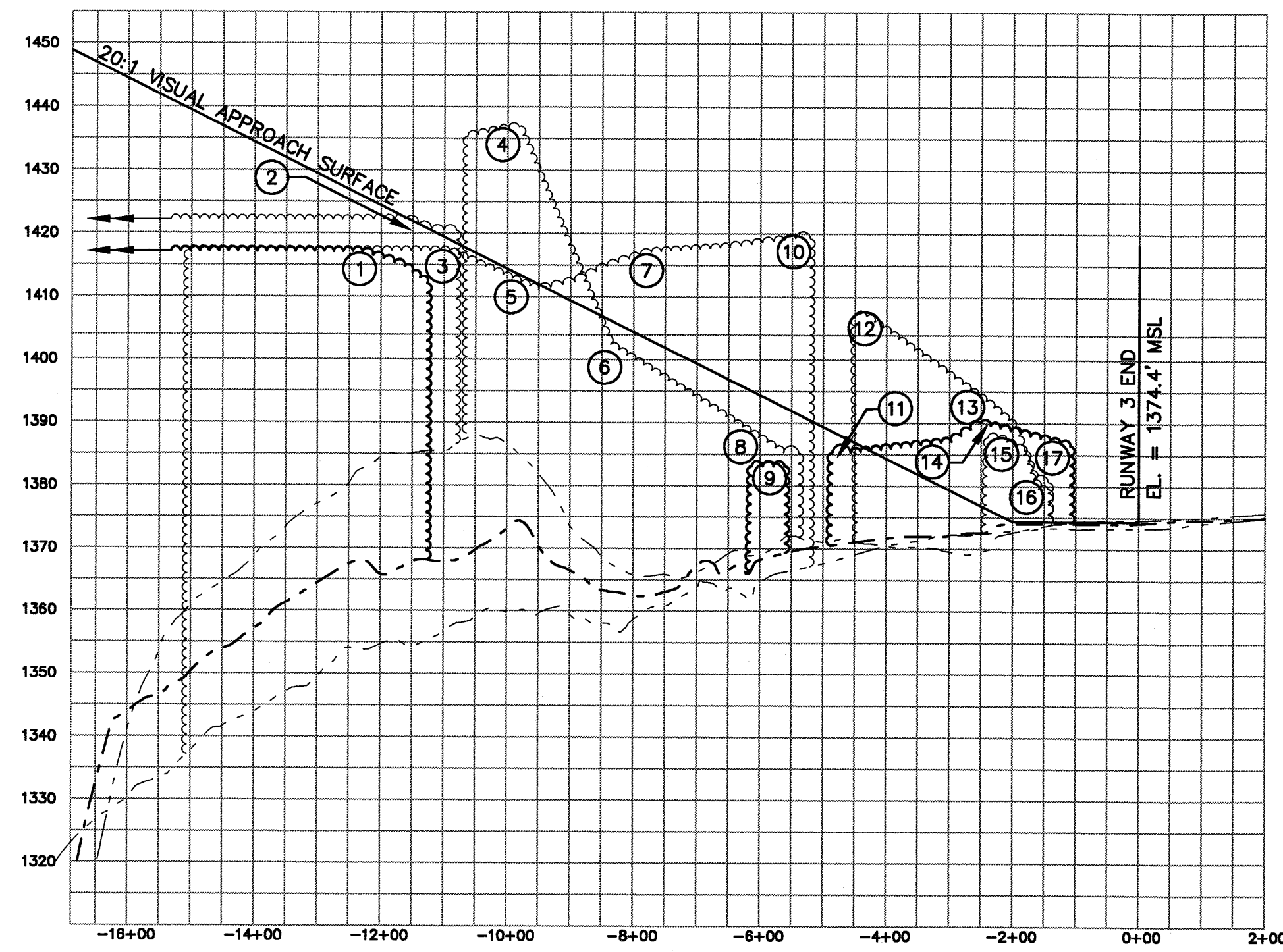
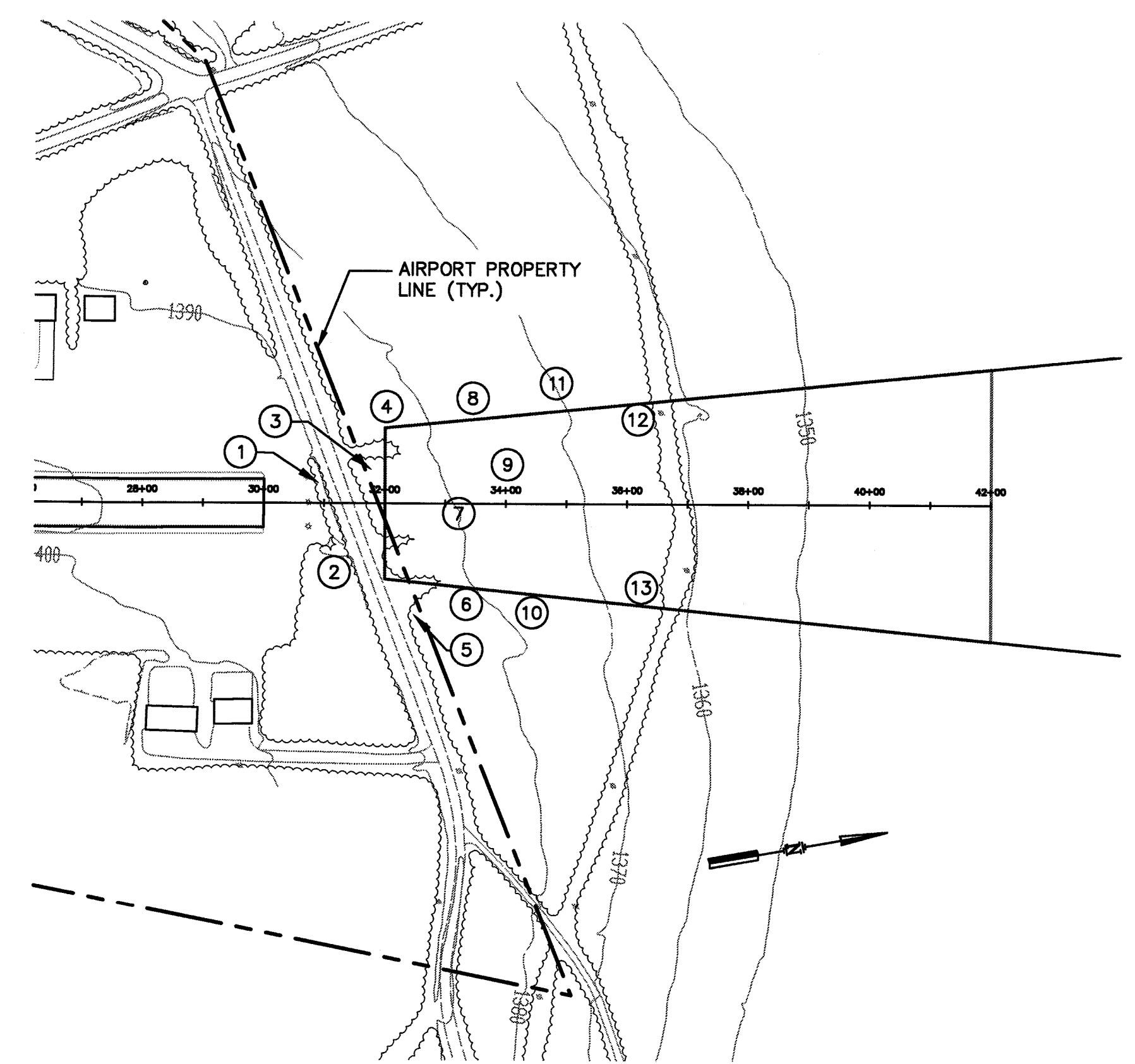
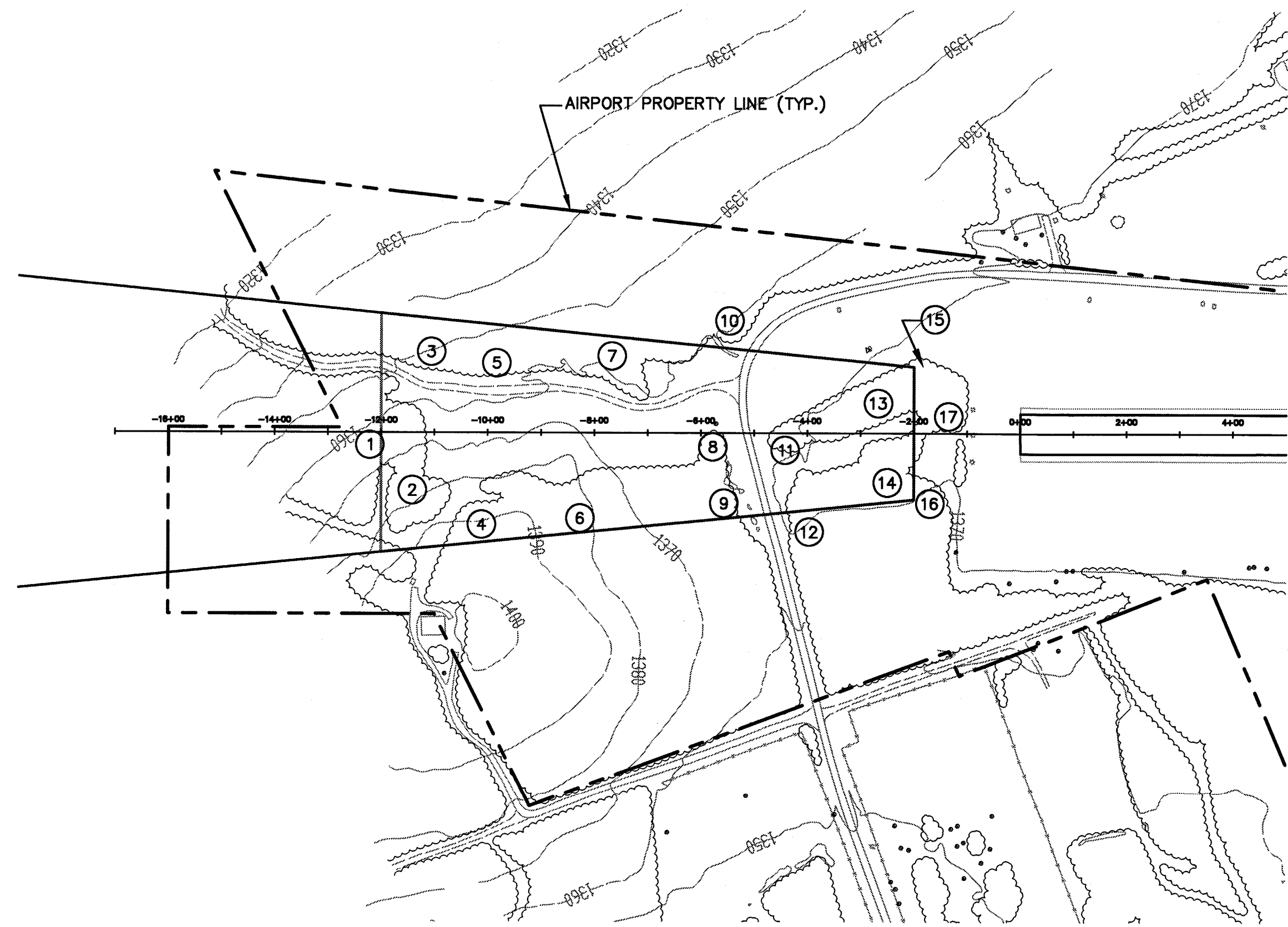






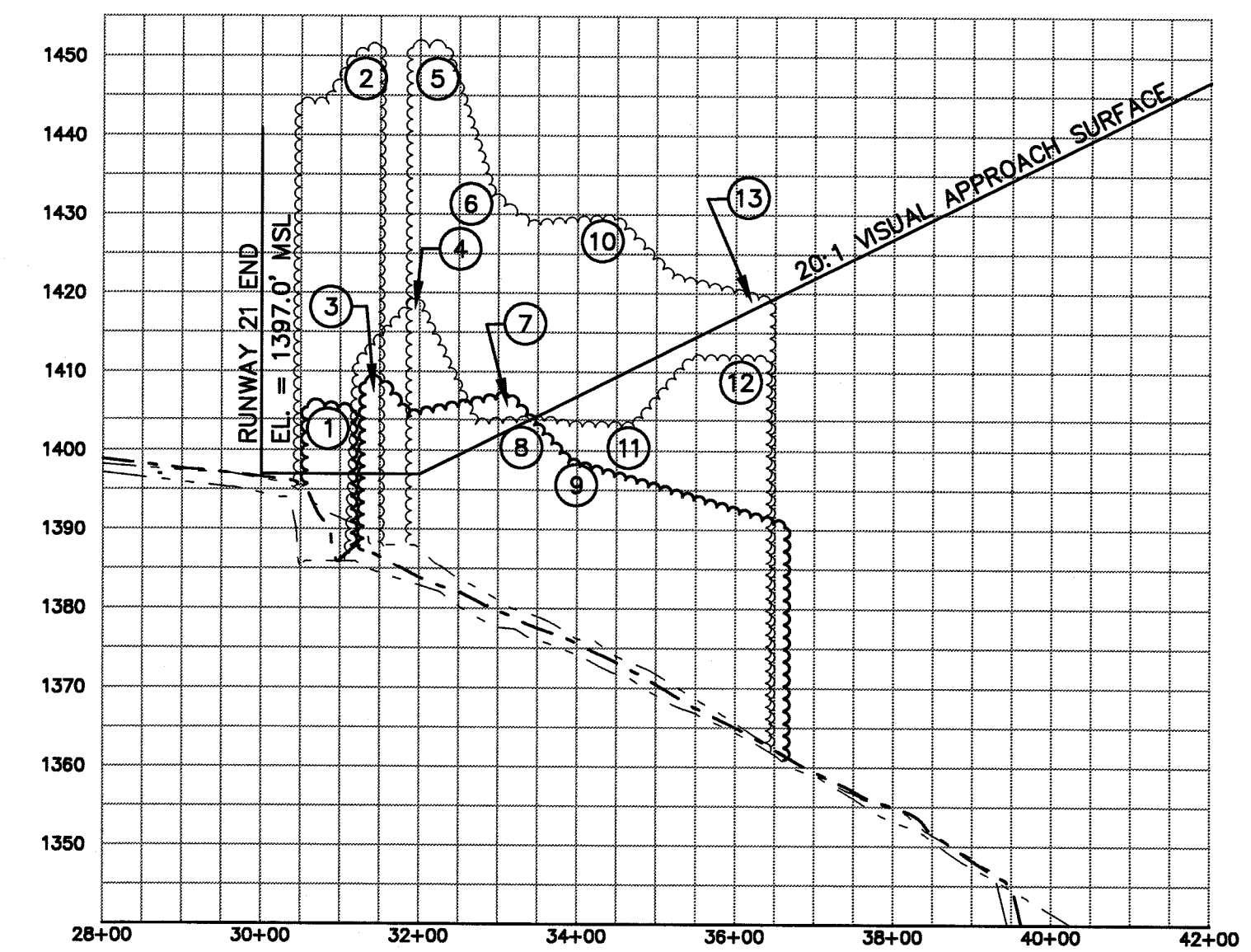






LEGEND	
CENTER OF APPROACH GROUND PROFILE	
RIGHT EDGE OF APPROACH GROUND PROFILE	
LEFT EDGE OF APPROACH GROUND PROFILE	
VEGETATION WITHIN APPROACH SURFACE	

SCALE  
 VERTICAL: 1" = 20'  
 HORIZONTAL: 1" = 200'



Rev.	Description	By	Date

MAINE

GREENVILLE MUNICIPAL AIRPORT  
 A.I.P. NO. 3-23-0049-07  
**RUNWAY 3-21 APPROACH  
 PLAN AND PROFILE**

GREENVILLE

Project No.	8180054.01
Proj. Manager	JW
Proj. Designer	ECO
Drawn By	MRS
Checked By	JW
Scale	AS NOTED
Approved	DCD
Date	11/29/00







